

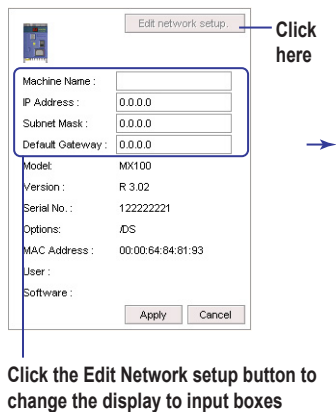
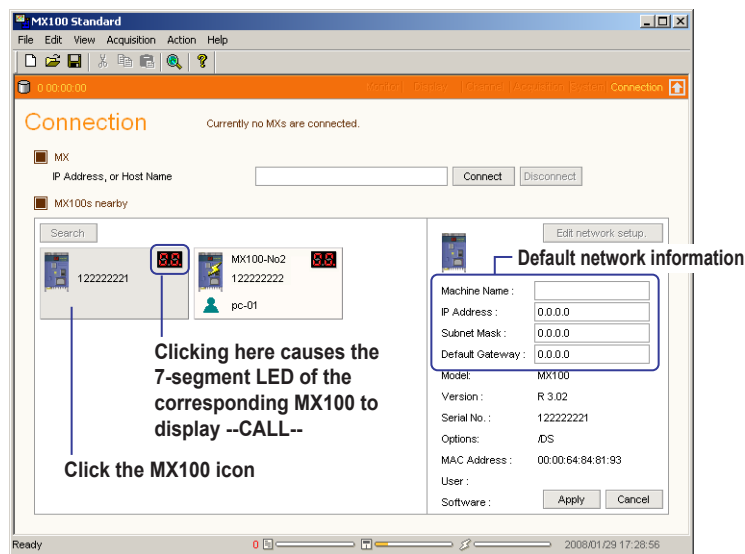
Please make the following alterations to the User's Manual IM MX180-01E (see underlined text).

## ■ Page i “Notes”

- This manual describes the MX100 Standard Software, release number “R3.01.” You can check the release number by choosing About from the Help menu of the Standard Software.

## ■ Page 2-2 “Connecting to an MX100 That Has Not Been Configured for the Network”

The default IP address and subnet mask values in step 3 and step 6 have been changed as in the figure below.



■ **Page 2-24** The following has been added to the explanation in section 2.4, “Setting the Measurement Conditions (Setting the Measurement Channels)”

**Input Mode and Measurement Range**

Measurement channel settings differ depending on the hardware style number of the MX100. See the table below.

Connectable module types or setting items	MX100 Hardware Style Number*			Notes
	S3	S2	S1	
30ch module MX110-VTD-L30	Yes	No	No	—
GOST range	Yes	No	No	Can be set only for MX110-UNV-M10, MX110-UNV-H04, MX110-V4R-M06, and MX110-VTD-L30

Yes: Setting and operation allowed

No: Setting and operation not allowed

\* The style number is printed on the MX100 main module name plate.

■ **Page 2-55** The following has been added to the explanation in section 2.9, “Setting Alarms.”

**Alarm Types**

Alarm level settings and operation differ depending on the hardware style number of the MX100. See the table below.

Connectable module types or setting items	MX100 Hardware Style Number*		
	S3	S2	S1
Alarm level setting (alarm3 to alarm 4)	Yes	No	No

Yes: Setting and operation allowed

No: Setting and operation not allowed

\* The style number is printed on the MX100 main module name plate.